

FineLine™ Wall display



FineLine™ single sided Wall display

FineLine is a system which provides a solution for most spaces in store. Our FineLine wall displays use a 9 or a 18 mm frame depending on the size . Since the display is wall mounted, this model is one-sided and you can easily change the banners since they have a thin magnetic strip around the whole reverse side.



Magnetic frame 9 mm



Mangetic frame 18 mm



Custom sizes



Fittings for slat wall

FineLine™ single sided Wall display

SIZE	PROFILE	WEIGHT
A4	9 mm	0,6 kg
A3	9 mm	1 kg
50x70 cm	9 mm	2 kg
70x100 cm	18 mm	4 kg
112x168 cm	18 mm	6 kg

Available colours



FineLine™ double sided Hanging display



FineLine™ double sided Hanging display

Our hanging displays hangs from the ceiling on strong, discreet wires. This gives you the chance to use all types of spaces for inspiration, information and sales - for example, double-sided banners in a display window or hanging from the ceiling where floor space is limited.



Magnetic frame 9 mm



Magnetic frame 18 mm

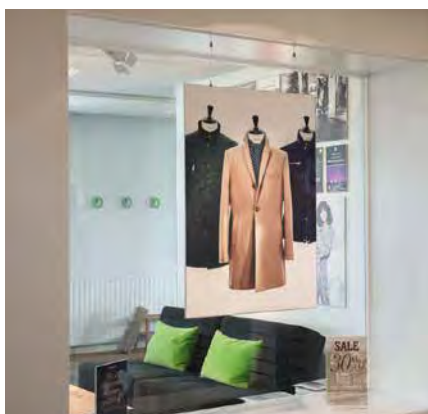
FineLine™ double sided Hanging display

SIZE	PROFILE	WEIGHT
A4	9 mm	§
A3	9 mm	1 kg
50x70 cm	18 mm	2 kg
70x100 cm	18 mm	4 kg
112x168 cm	18 mm	6 kg

Available colours



Double sided window application



Fittings for wire assembly